

# Dřevohostice, Přerov distr., Olomouc Region

## Prehistoric barrow cemetery

(2800–100 BC)



The largest barrow cemetery from the end of the Eneolithic on the territory of the Czech Republic was discovered at the end of the 19th century. At that time, 11 mounds containing skeletal graves were researched at the site. At the beginning of the 20th century, additional 21 were excavated; today, we count a total of 32 barrows, 7 of which belong to the Bell-Beaker culture and 14 to the Corded Ware culture (the remaining barrows could not be dated). The barrows, standing in groups or isolated, have a diameter of 6–15 m, are 0.5–1 m high and all show disturbances typical for archaeological excavations. The dead lay in crouched position in grave pits; grave goods typically consisted of pottery, polished and chipped stone tools.

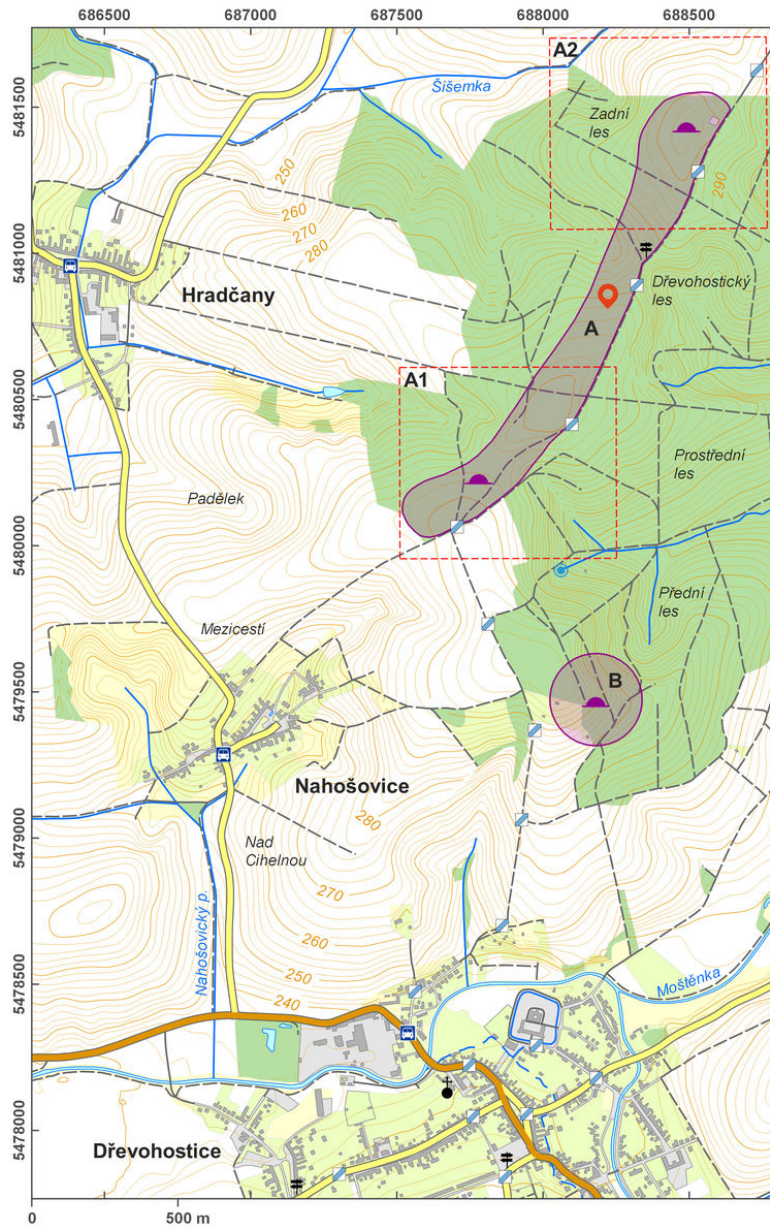
**References:** Peška – Plaček 2002; Peška 2013; Peška a kol. 2014.

**Navigation point:** N 49°27'03.68", E 17°35'46.04" (site centre).

[https://www.archeologickyatlas.cz/en/lokace/drevohostice\\_pr\\_mohylnik](https://www.archeologickyatlas.cz/en/lokace/drevohostice_pr_mohylnik)

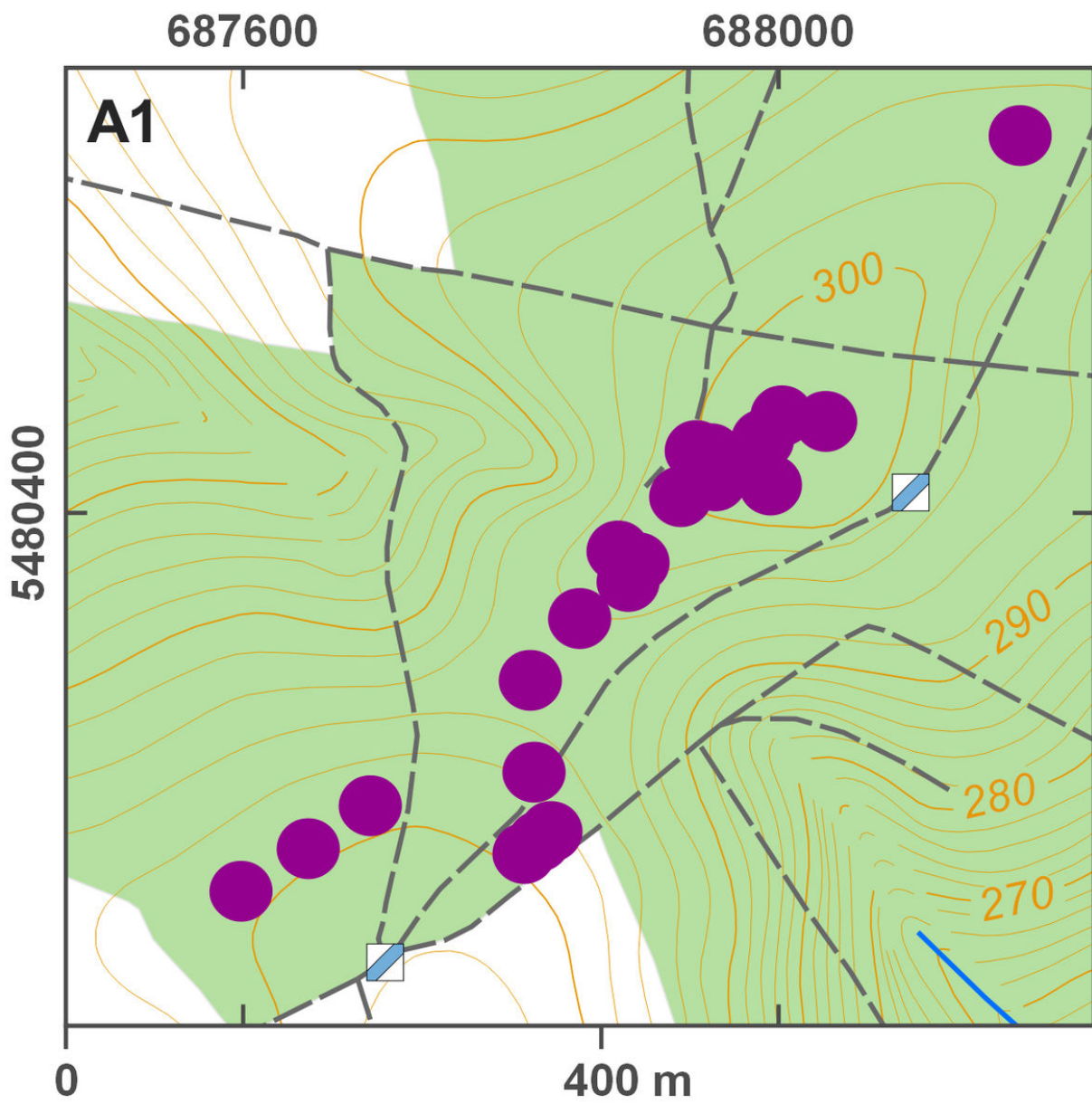
**Map notes:** A-B - barrow cemeteries.





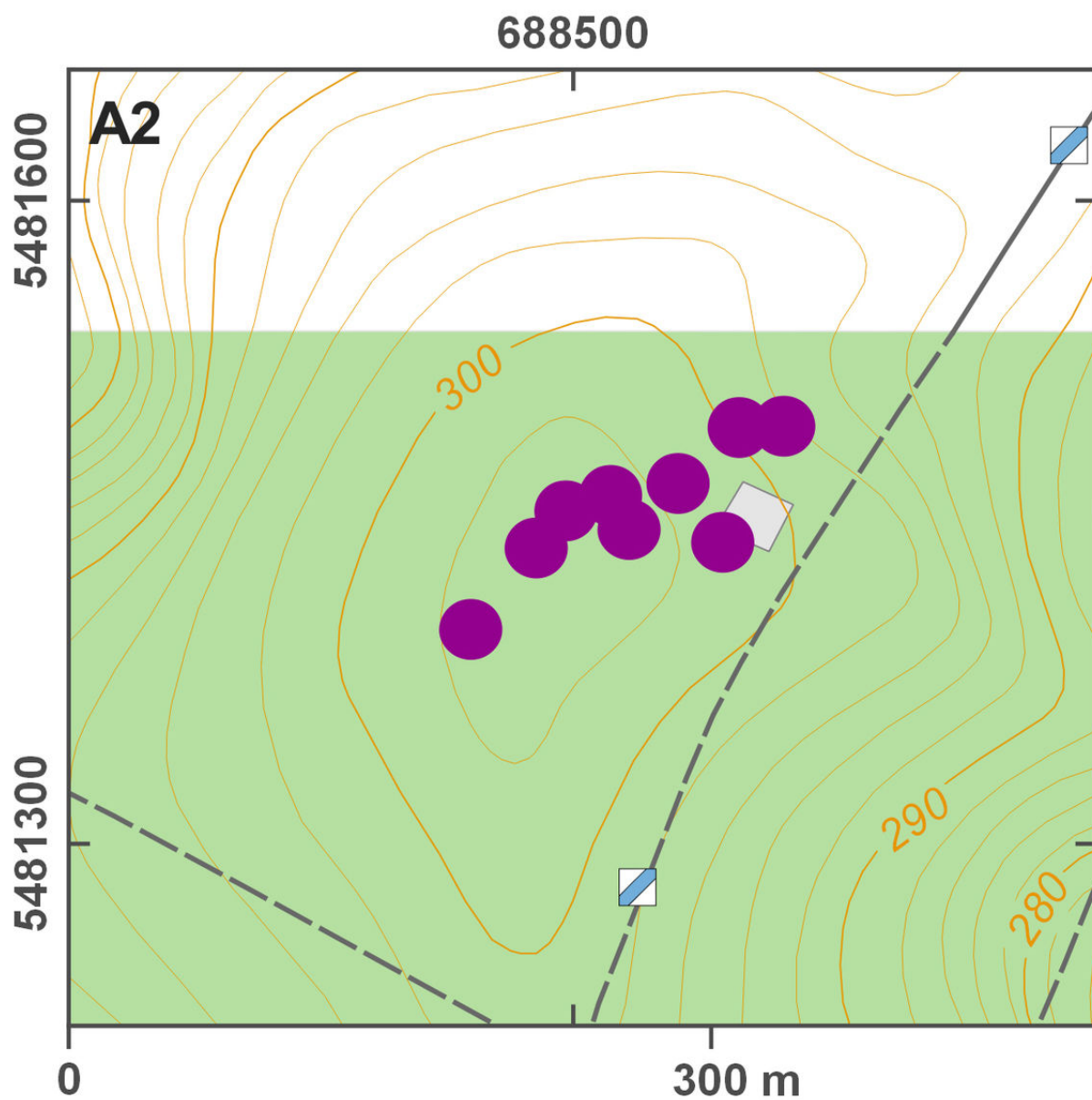
Access map/site plan.

After Tomášek et al. 2015.



Site plan.

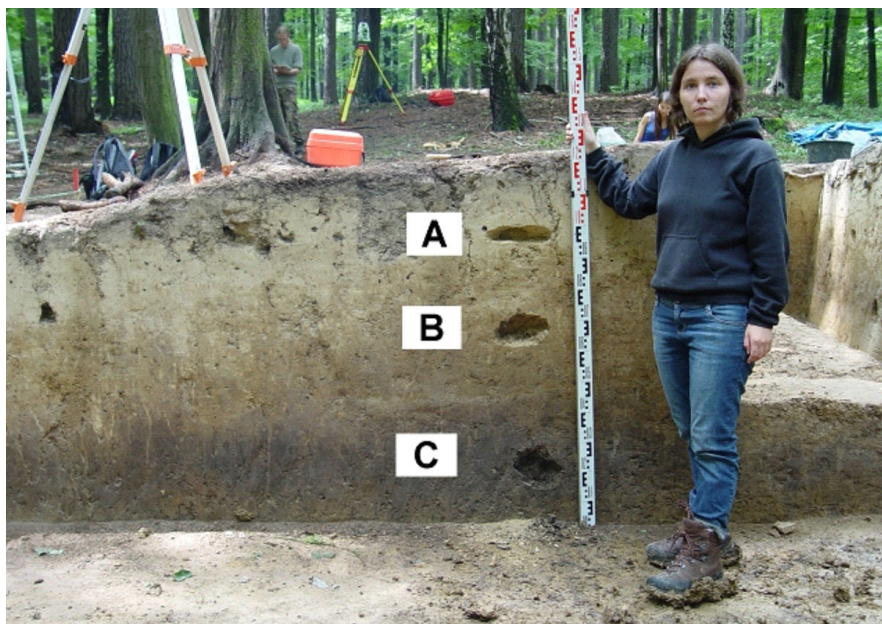
After Tomášek et al. 2015.



Site plan.

After Tomášek et al. 2015.





Dřevohostický Forest, section of barrow No. 8 in the Zadní les field; the archaeological excavation was part of a project conducted in 2011–2013.

Photo J. Peška.